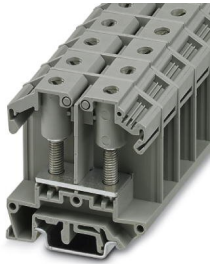


Feed-through terminal block - OTTA 25-M6

0790491

<https://www.phoenixcontact.com/us/products/0790491>

Please be informed that the data shown in this PDF document is generated from our Online Catalog. Please find the complete data in the user documentation. Our General Terms of Use for Downloads are valid.



Universal terminal block with bolt connection, slotted-head screw, cross section: 1 ... 25 mm², width: 18 mm, color: gray

Feed-through terminal block - OTTA 25-M6



0790491

<https://www.phoenixcontact.com/us/products/0790491>

Commercial Data

Item number	0790491
Packing unit	1 pc
Minimum order quantity	1 pc
Sales Key	B04
Product Key	BE4513
Catalog Page	Page 565 (C-1-2019)
GTIN	4017918005603
Weight per Piece (including packing)	54.045 g
Weight per Piece (excluding packing)	54.045 g
Customs tariff number	85369010
Country of origin	IN

Feed-through terminal block - OTTA 25-M6



0790491

<https://www.phoenixcontact.com/us/products/0790491>

Technical Data

Product properties

Product type	Bolt connection terminal block
Number of connections	2
Number of rows	1
Potentials	1

Insulation characteristics

Overvoltage category	III
Degree of pollution	3

Electrical properties

Rated surge voltage	8 kV
Maximum power dissipation for nominal condition	3.26 W

Connection data

Number of connections per level	2
Nominal cross section	25 mm ²

1 level

Stripping length	The stripping length depends on the specification provided by the cable lug manufacturer. The stripping length depends on the specification provided by the cable lug manufacturer.
Connection in acc. with standard	IEC 60947-7-1
Nominal current	101 A
Maximum load current	101 A (with 25 mm ² conductor cross section)
Nominal voltage	800 V (the nominal voltage applies to insulated cable lugs)
Nominal cross section	25 mm ²

Cable lug connection DIN 46234:1980-03

Connection in acc. with standard	DIN 46234:1980-03
Cross section	1.5 mm ² ... 25 mm ²
Cross section range AWG	16 ... 4
Hole diameter	6.5 mm
Width	16 mm
Bolt diameter	6 mm
Screw thread	M6
Tightening torque	3.2 ... 3.7 Nm
Connection in acc. with standard	DIN 46237:1970-07
Cross section	2.5 mm ² ... 6 mm ²
Hole diameter	6.5 mm
Width	16 mm
Bolt diameter	6 mm

Feed-through terminal block - OTTA 25-M6



0790491

<https://www.phoenixcontact.com/us/products/0790491>

Screw thread	M6
Tightening torque	3.2 ... 3.7 Nm

Dimensions

Width	18 mm
End cover width	2 mm
Height NS 35/15	72 mm
Height NS 35/7,5	64.5 mm
Height	2.539 "
Height NS 32	69.5 mm
Length	60 mm

Material specifications

Color	gray
Flammability rating according to UL 94	V0
Insulating material group	I
Insulating material	PA
Static insulating material application in cold	-60 °C
Temperature index of insulation material (DIN EN 60216-1 (VDE 0304-21))	130 °C
Relative insulation material temperature index (Elec., UL 746 B)	130 °C
Fire protection for rail vehicles (DIN EN 45545-2) R22	HL 1 - HL 3
Fire protection for rail vehicles (DIN EN 45545-2) R23	HL 1 - HL 3
Fire protection for rail vehicles (DIN EN 45545-2) R24	HL 1 - HL 3
Fire protection for rail vehicles (DIN EN 45545-2) R26	HL 1 - HL 3
Calorimetric heat release NFPA 130 (ASTM E 1354)	28 MJ/kg
Surface flammability NFPA 130 (ASTM E 162)	passed
Specific optical density of smoke NFPA 130 (ASTM E 662)	passed
Smoke gas toxicity NFPA 130 (SMP 800C)	passed

Electrical tests

Surge voltage test

Test voltage setpoint	9.8 kV
Result	Test passed

Temperature-rise test

Requirement temperature-rise test	Increase in temperature \leq 45 K
Result	Test passed
Short-time withstand current 25 mm ²	3 kA
Result	Test passed

Power-frequency withstand voltage

Test voltage setpoint	2.2 kV
Result	Test passed

Feed-through terminal block - OTTA 25-M6



0790491

<https://www.phoenixcontact.com/us/products/0790491>

Mechanical properties

Mechanical data

Open side panel	Yes
-----------------	-----

Mechanical tests

Mechanical strength

Result	Test passed
--------	-------------

Attachment on the carrier

DIN rail/fixing support	NS 32/NS 35
Test force setpoint	10 N
Result	Test passed

Environmental and real-life conditions

Needle-flame test

Time of exposure	30 s
Result	Test passed

Ambient conditions

Ambient temperature (operation)	-60 °C ... 105 °C (max. short-term operating temperature RTI Elec.)
Ambient temperature (storage/transport)	-25 °C ... 60 °C (for a short time, not exceeding 24 h, -60 °C to +70 °C)
Ambient temperature (assembly)	-5 °C ... 70 °C
Ambient temperature (actuation)	-5 °C ... 70 °C
Permissible humidity (storage/transport)	30 % ... 70 %

Standards and regulations

Connection in acc. with standard	IEC 60947-7-1
----------------------------------	---------------

Mounting

Mounting type	NS 35/7,5
	NS 35/15
	NS 32

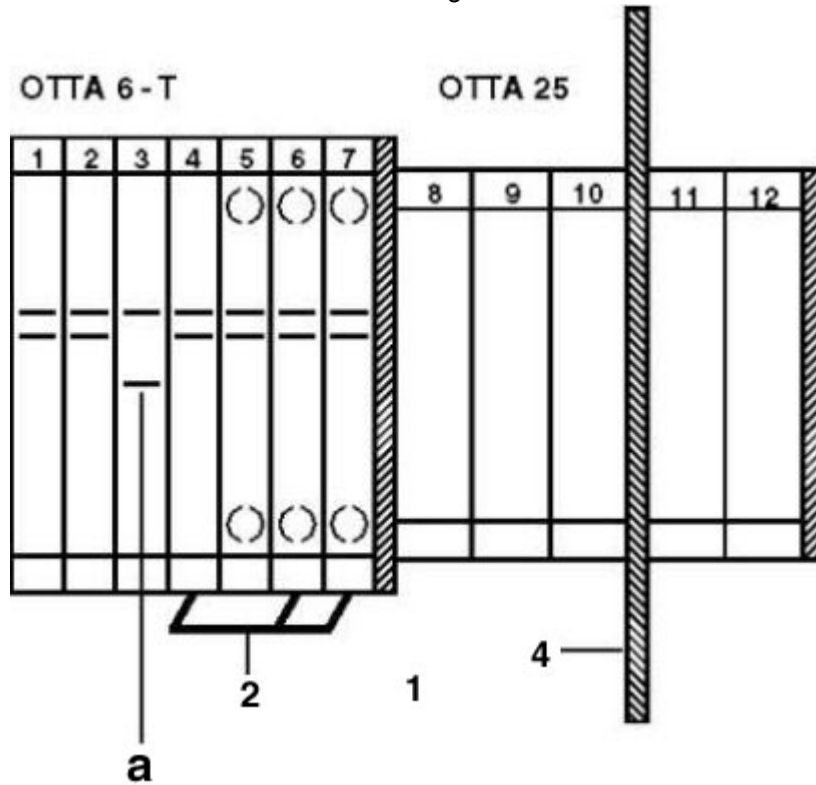
Feed-through terminal block - OTTA 25-M6

0790491

<https://www.phoenixcontact.com/us/products/0790491>

Drawings

Circuit diagram



- a = open
- 1 = cover
- 2 = insertion bridge
- 4 = partition plate

Feed-through terminal block - OTTA 25-M6



0790491

<https://www.phoenixcontact.com/us/products/0790491>

Circuit diagram



Feed-through terminal block - OTTA 25-M6



0790491

<https://www.phoenixcontact.com/us/products/0790491>

Approvals

DNV	Nominal Voltage U_N	Nominal Current I_N	Cross Section AWG	Cross Section mm^2
			-	-

CSA	Nominal Voltage U_N	Nominal Current I_N	Cross Section AWG	Cross Section mm^2
	600 V	100 A	18 - 4	-

UL Recognized	Nominal Voltage U_N	Nominal Current I_N	Cross Section AWG	Cross Section mm^2
Use group B				
	600 V	115 A	-	-
Use group C				
	600 V	115 A	-	-

EAC

LR

Feed-through terminal block - OTTA 25-M6



0790491

<https://www.phoenixcontact.com/us/products/0790491>

Classifications

ECLASS

ECLASS-9.0	27141120
ECLASS-10.0.1	27141120
ECLASS-11.0	27141120

ETIM

ETIM 8.0	EC000897
----------	----------

UNSPSC

UNSPSC 21.0	39121410
-------------	----------

Feed-through terminal block - OTTA 25-M6



0790491

<https://www.phoenixcontact.com/us/products/0790491>

Environmental Product Compliance

REACH SVHC	Lead 7439-92-1
China RoHS	Environmentally Friendly Use Period = 50 years For details about hazardous substances go to tab "Downloads", Category "Manufacturer's declaration"

Phoenix Contact 2022 © - all rights reserved
<https://www.phoenixcontact.com>

Phoenix Contact USA
586 Fulling Mill Road
Middletown, PA 17057, United States
(+717) 944-1300
info@phoenixcon.com