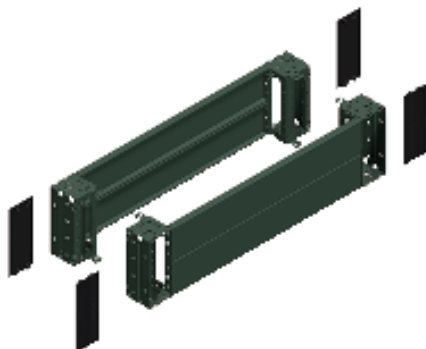


EAN Code: 3606485126692

Price*: 99.20 EUR



Main

Range	Spacial
Accessory / separate part category	Enclosure accessory
Product or component type	Plinth front
Device application	Multi-purpose
Enclosure nominal dimensions	-
Device composition	Fixing elements 4 corner cover 4 corner 2 front panel 2 rear panel
Range compatibility	Spacial SF Spacial SM Spacial SD Spacial S3D Spacial CRN
Mounting support	Plinth side panels

Complementary

Fixing mode	By fixing element - on structure location
Colour	Grey (RAL 7022)
Surface finish	Epoxy-polyester powder
Permanent permissible load	1300 Kg
Height	200 Mm
Width	1000 Mm nominal:

Environment

IP degree of protection	IP30 (complete plinth)
IK degree of protection	IK10

Packing Units

Unit Type of Package 1	PCE
Number of Units in Package 1	1
Package 1 Weight	11.431 Kg
Package 1 Height	20.5 Cm
Package 1 width	21.5 Cm
Package 1 Length	102 Cm

Offer Sustainability

Sustainable offer status	Green Premium product
REACH Regulation	REACH Declaration
REACH free of SVHC	Yes
EU RoHS Directive	Pro-active compliance (Product out of EU RoHS legal scope) EU RoHS Declaration
Mercury free	Yes
RoHS exemption information	Yes
China RoHS Regulation	China RoHS Declaration
Environmental Disclosure	Product Environmental Profile

Contractual warranty

Warranty	18 months
----------	-----------

Product Life Status : **Commercialised**