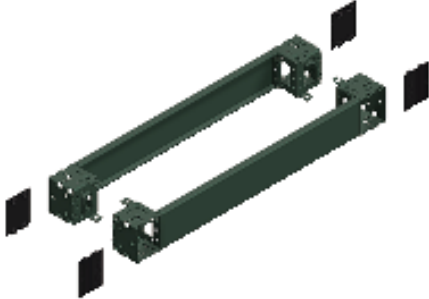


EAN Code: 3606485126593

Price\*: 61.70 EUR



### Main

Range	Spacial
Accessory / separate part category	Enclosure accessory
Product or component type	Plinth front
Device application	Multi-purpose
Enclosure nominal dimensions	-
Device composition	Fixing elements 4 corner cover 1 front panel 1 rear panel 4 corner
Range compatibility	Spacial SF Spacial SM Spacial SD Spacial S3D Spacial CRN
Mounting support	Plinth side panels

### Complementary

Fixing mode	By fixing element - on structure location
Colour	Grey (RAL 7022)
Surface finish	Epoxy-polyester powder
Permanent permissible load	1300 Kg
Height	100 Mm
Width	1200 Mm nominal:

### Environment

IP degree of protection	IP30 (complete plinth)
IK degree of protection	IK10

### Packing Units

Unit Type of Package 1	PCE
Number of Units in Package 1	1
Package 1 Weight	6.8 Kg
Package 1 Height	11 Cm
Package 1 width	20.5 Cm
Package 1 Length	121 Cm

## Offer Sustainability

Sustainable offer status	Green Premium product
REACH Regulation	<a href="#">REACH Declaration</a>
REACH free of SVHC	Yes
EU RoHS Directive	Pro-active compliance (Product out of EU RoHS legal scope) <a href="#">EU RoHS Declaration</a>
Mercury free	Yes
RoHS exemption information	<a href="#">Yes</a>
China RoHS Regulation	<a href="#">China RoHS Declaration</a>
Environmental Disclosure	<a href="#">Product Environmental Profile</a>

## Contractual warranty

Warranty	18 months
----------	-----------

Product Life Status : **Commercialised**